

Hopper system BBH3,5 - BBH30

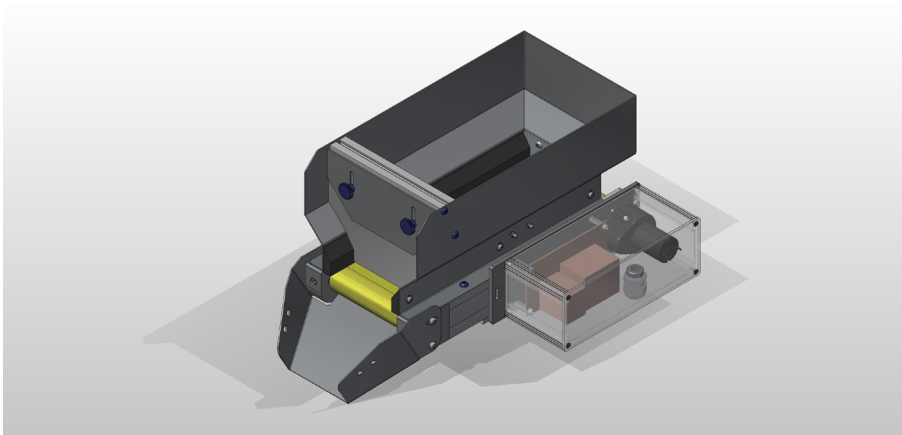
Characteristics

The hoppers of type BBH3,5-BBH30 dispense the required part volume into the sorting bowl sensitively and gently (without vibrations). An adjustable lateral guide




also prevents small parts from jamming between the transportation belt and the bulk hopper. Even smaller system dimensions for automatic assembly machines can

be very well realized with the type BBH3,5-BBH30. Also transportation belts in food-safe versions are available.

Structure



Colour scheme of the individual components:

-  Motor
-  Hopper control
-  Conveyor belt

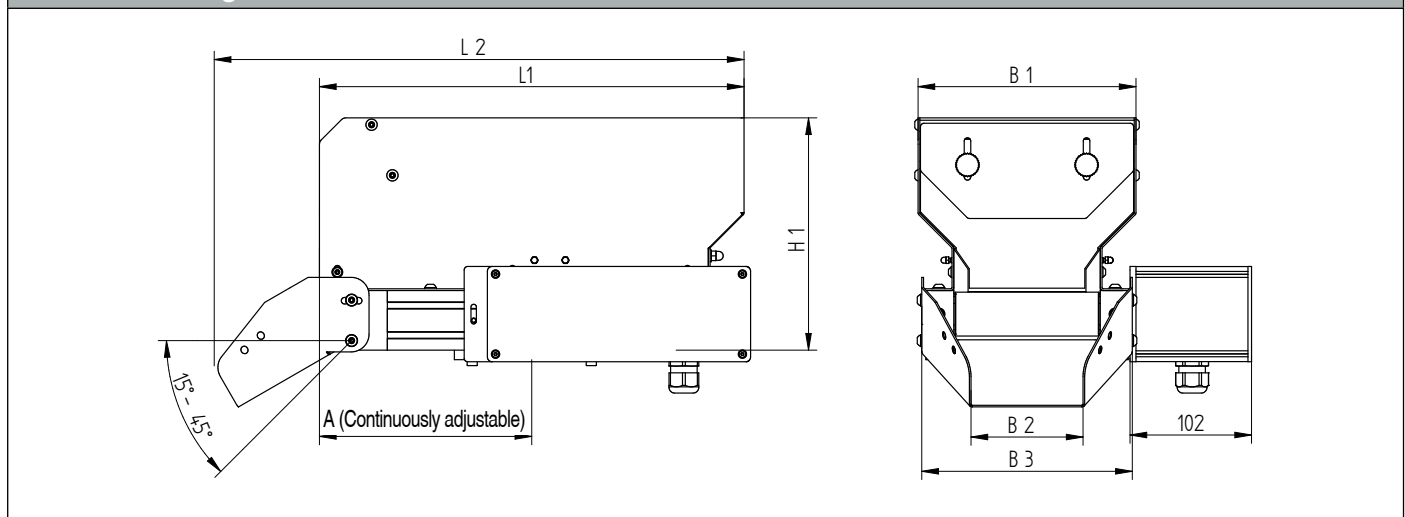
Technical data

Device type	BBH3,5	BBH5	BBH10	BBH20	BBH30
Motor	24V / 3W	24V / 3W	24V / 3W	24V / 3W	24V / 3W
Belt speed [m/min]	0,32	0,32	0,32	0,32	0,32
max. filling volume [l]	3,5	5	10	20	30
max. filling weight [kg]	15	20	20	35	35
Protection class in accordance with DIN EN 60529	IP 54	IP 54	IP 54	IP 54	IP 54
Article no.	10000912	10000913	10000914	10000910	10000915

Dimensions

Device type	Dimensions [mm]							
	A _{min}	A _{max}	B1	B2	B3	H1	L1	L2
BBH3,5	122	199,5	183	94	177	185	322	410
BBH5	122	234,5	183	94	177	203	357	442
BBH10	122	329,5	273	115	207	228	482	627
BBH20	122	389,5	283	115	207	293	547	692
BBH30	122	529,5	283	115	207	323	687	832

Technical drawing



Accessories

Designation	Description	Article no.
DN21V speed control	Connection: 230 V/50 Hz, for infinitely variable speed adjustment of 24 V DC motors up to 4 A	21012001
Pendulum switch PS1	Pendulum switch PS1 for automated filling level control of bulk material in the sorting device, inductive switch without wear	21005856
Stand for BBH3,5-BBH30	Available individually	–
Cover for BBH3,5-BBH30	Cover over the bulk hopper made of transparent acrylic glass	–
Filling level query	Filling level query in the bulk hopper with light barrier divided into two parts	10000268