

Step feeder SHZ 100 - 200

Characteristics

Compared to the larger models of this series, the SHZ 100-200 step conveyors are even more compact and designed without a base frame so that they can be placed directly on a customer's substructure. Here, too, solid steel slide plates

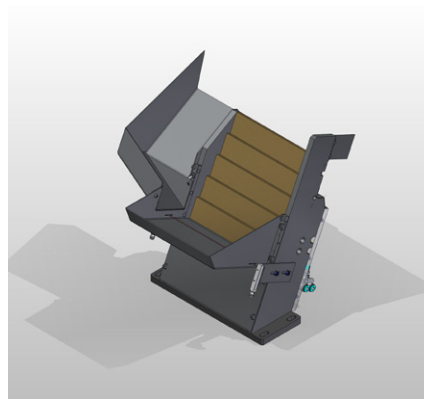
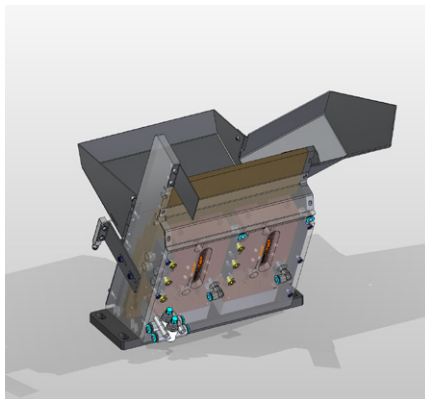
are used for part alignment, which are pneumatically driven.

The SHZ 100-200 are used for small, sometimes heavy parts. Due to their design, the SHZ are ideally suited for elongated, bar-like parts and ensure low-noise and



gentle alignment of a wide variety of workpieces.

The hopper volume is adapted to the individual requirements for each size.

Structure



Color scheme of the individual components:

-  Slide plates
-  Drive slide plates

Technical data

Device type	SHZ100	SHZ200
Net weight [kg]	approx. 15	approx. 22
Filling weight [kg]*	depends on the parts	depends on the parts
Pneumatics	6 bar	6 bar

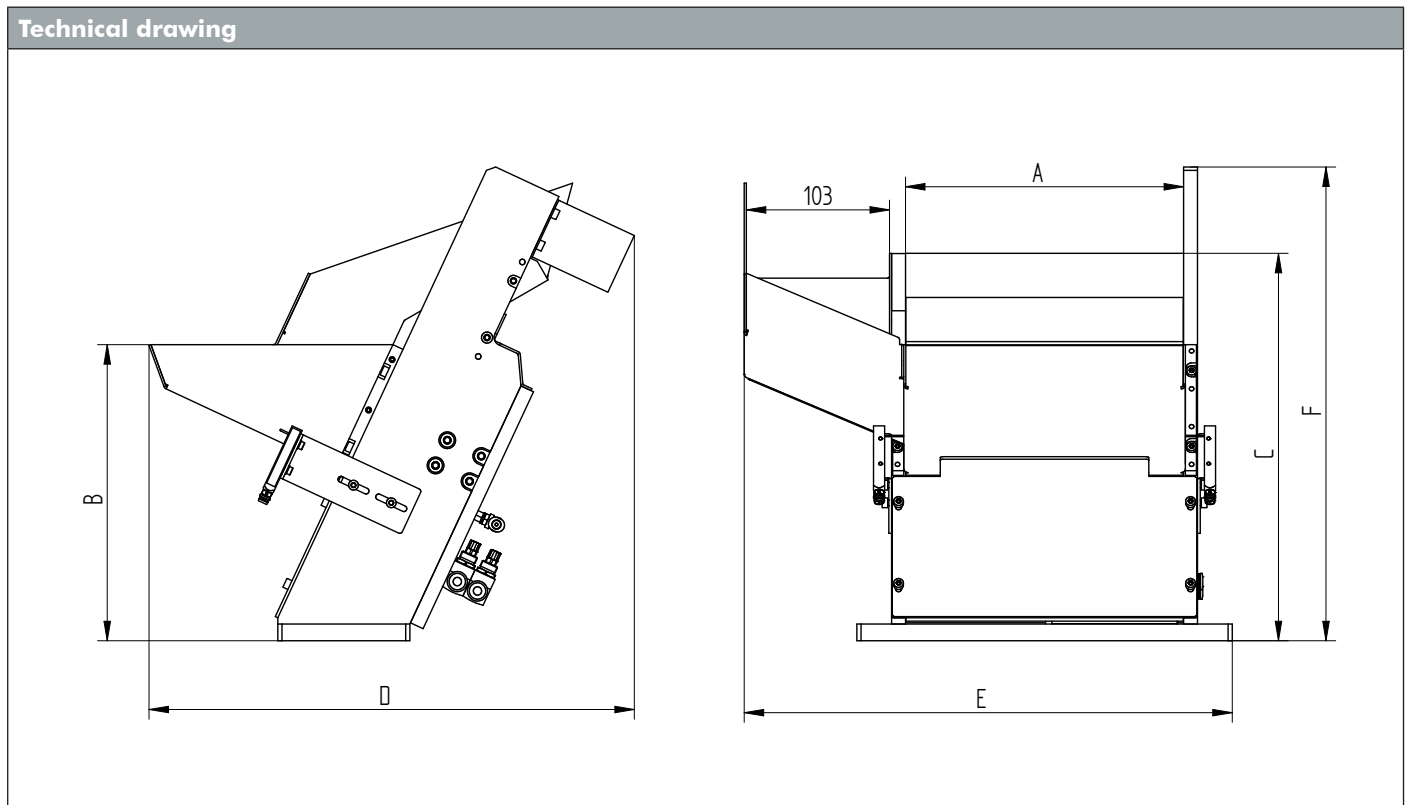
* Filling weights depend on the parts.

** Data were not yet available at the time of publication.

Dimensions

Device type	Dimensions [mm]					
	Stage depth A	Filling height B	Outlet height C	Total length D	Total width E	Total height F
SHZ 100	100	approx. 213	approx. 279	approx. 349	approx. 310	approx. 341
SHZ 200	200				approx. 351	

Technical drawing



Accessories

Designation	Description	Article no.
Hopper Belt BBH3,5-30	Hopper belt for part stocking	—
Hopper system VNB1-50	Vibration hopper for part stocking	—