

Step feeder SHZ 300 - 500

Characteristics

Characteristic of the SHZ 300-500 step conveyors are the compact design and the solid steel slide plates, which are pneumatically or electrically driven, depending on the application.

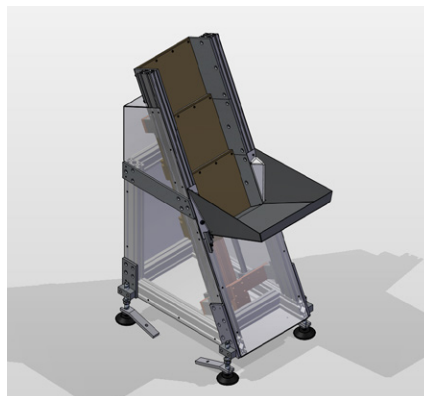
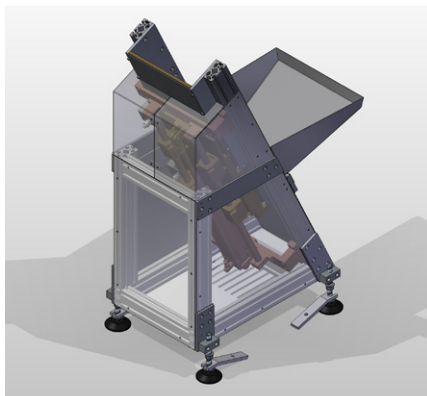
They are used for small to medi-

um-sized, sometimes even heavy parts. Due to their design, the SHZ are ideally suited for elongated, bar-like parts and ensure low-noise and gentle alignment of a wide variety of workpieces.



The hopper volume, the maximum

filling weight, the number of stages and the stage depth are adapted to the individual requirements for each size.

Structure



Color scheme of the individual components:

-  Slide plates
-  Drive slide plates

Technical data

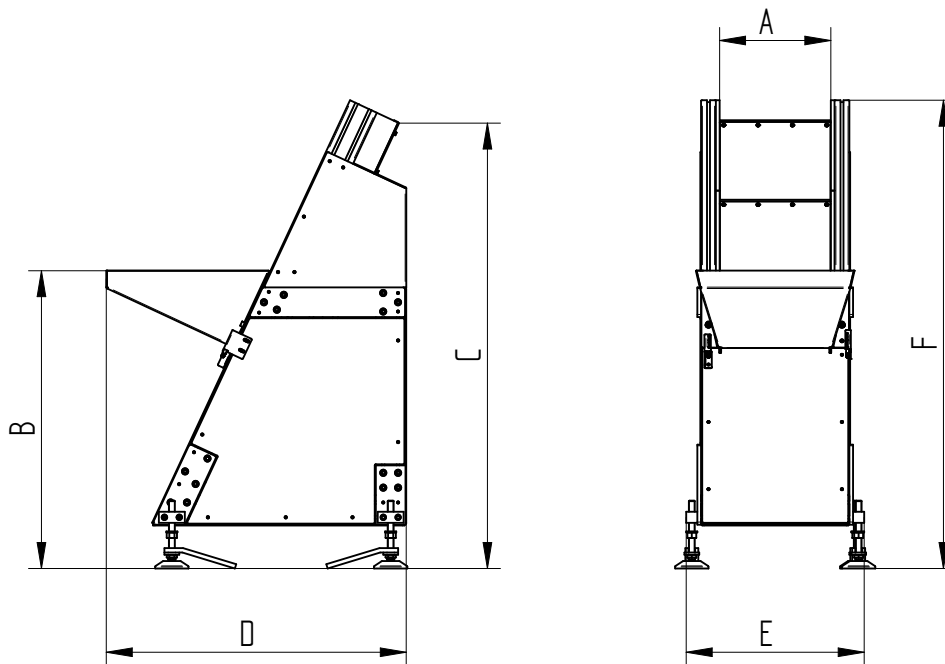
Device type	SHZ300	SHZ400	SHZ500
Required mains power	230V/400V; 1,65A/0,95A; 0,37KW		
Net weight [kg]	200	250	300
Filling weight [kg]*	–	–	–
Pneumatics	6 bar	6 bar	6 bar
Protection class in accordance with DIN EN 60529	IP 52	IP 52	IP 52

* Filling weights depend on the parts.

Dimensions

Device type	Dimensions [mm]					
	Stage depth A	Filling height B	Outlet height C	Total length D	Total width E	Total height F
SHZ 300	300	approx. 800	approx. 1200	approx. 810	480	approx. 1260
SHZ 400	400				580	
SHZ 500	500				680	

Technical drawing



Accessories

Designation	Description	Article no.
Hopper belt BBH80-180	Hopper belt for part stocking	VART000394