

Hopper system BBH40 - BBH80

Characteristics

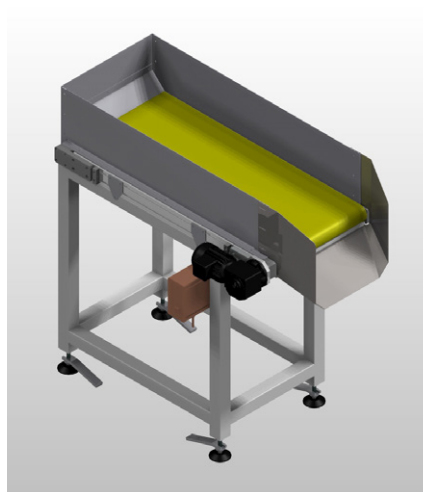
The hopper system of type BBH 40 - BBH 80 prolongs the autonomy of the feeding system decisively and also reduces its susceptibility to failure. It is characterized by its

space-saving structure, whereby filling weights of up to 350 kg can be transported.




Combination options with pre- or post-connected hopper systems as

well as tilting devices for wire mesh boxes or large containers are possible.

Structure



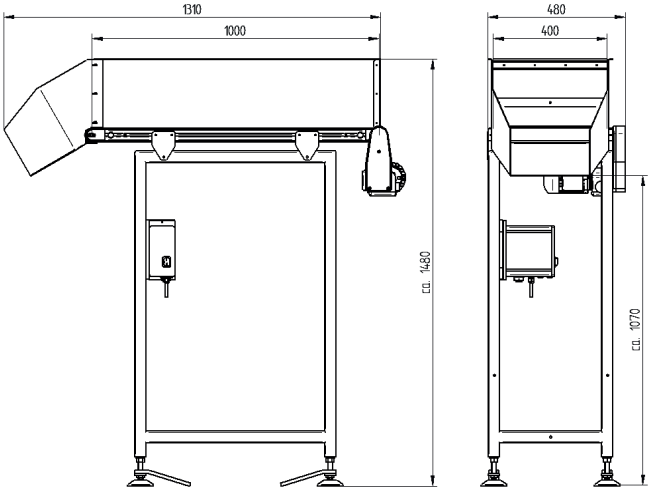
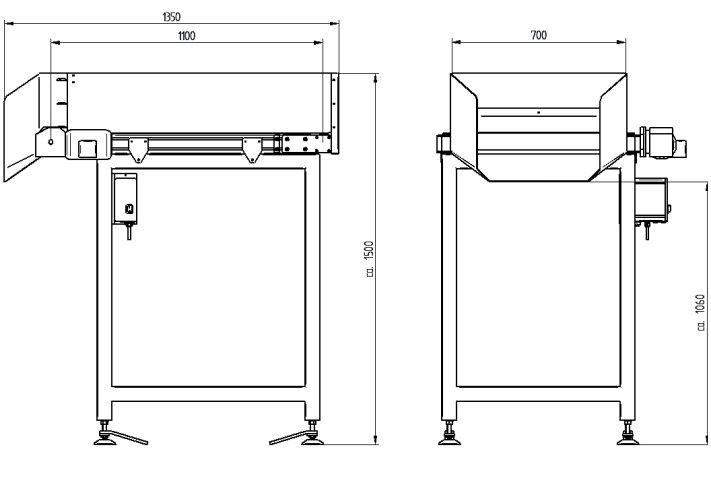
Color scheme of the individual components:

-  Motor
-  Hopper control
-  Conveyor belt

Technical data

| Device type | BBH40-400-1000 | BBH80-700-1100 |
|--|-----------------------|-----------------------|
| max. filling volume [l] | 80 | 180 |
| max. filling weight [kg] | 75 | 350 |
| Protection class in accordance with DIN EN 60529 | IP 54 | IP 54 |
| Article no. | 10000730 | 10000731 |

Dimensions

| Technical drawing | |
|--|---|
| Typ BBH40-400-1000 | Typ BBH80-700-1100 |
|  |  |

Accessories

| Designation | Description | Article no. |
|-------------------------------------|---|-------------|
| Hopper control BS5 | Hopper control BS5 for belt hopper of type BSF-1, BBH, BBR, BBV | 21008720 |
| Pendulum switch PS1 | Pendulum switch PS1 for automated filling level control of bulk material in the sorting device, inductive switch without wear | 21005856 |
| Filling level query | Filling level query in the bulk hopper with light barrier divided into two parts | 10000268 |
| Container storage / pedestal | – | – |
| Tilting device GAMMA / DELTA | Tilting device for filling the hopper belt as well as for emptying wire mesh boxes | – |