

Hopper system BBR-i

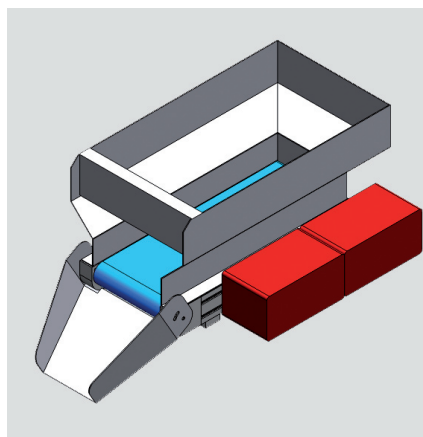
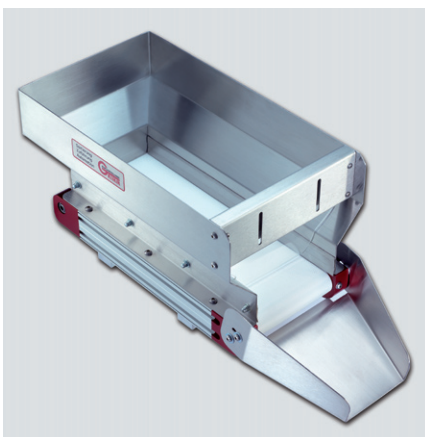
Characteristics

The hoppers of type BBR-i dispense the required part volume into the sorting bowl sensitively and gently (without vibrations). An adjustable lateral guide also prevents small



parts from jamming between the transportation belt and the bulk hopper. Even smaller system dimensions for automatic assembly machines can be very well realized

with the type BBR-i. Also, bulk hoppers are available in stainless steel and transportation belts in food-safe versions.

Structure



Color scheme of the individual components:

-  Hopper control
-  Conveyor belt

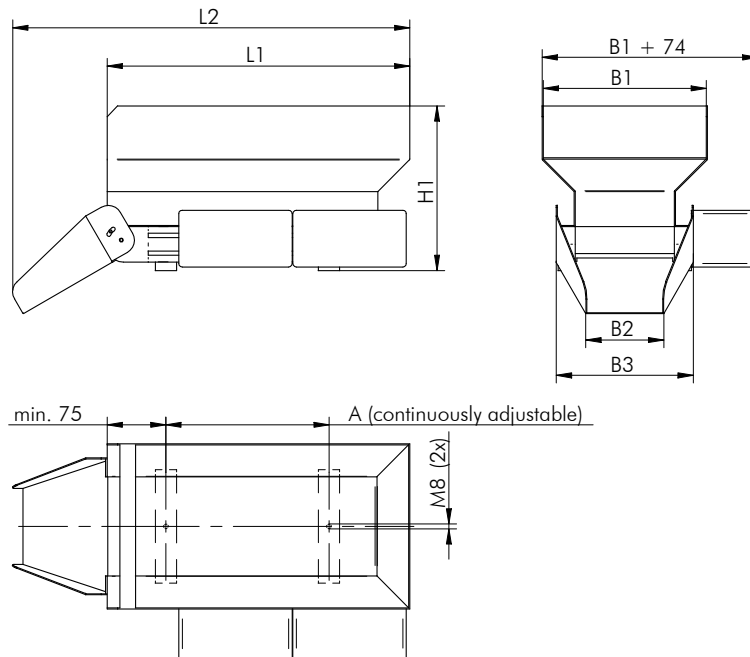
Technical data

Device type	BBR10-i	BBR25-i
Motor	24 V/ 10 W	24 V/ 10 W
Belt speed [m/min]	0.1	0.1
max. filling volume [l]	10	25
max. filling weight [kg]	30	40
Protection class in accordance with DIN EN 60529	IP 54	IP 54
Article no.	1-000169	1-000170

Dimensions

Device type	Dimensions [mm]							
	A _{min}	A _{max}	B ₁	B ₂	B ₃	H ₁	L ₁	L ₂
BBR10-i	150	250	230	110	196	232	427	552
BBR25-i	210	350	280	120	206	297	547	662

Technical drawing



Accessories

Designation	Description	Article no.
Hopper control BB1	Hopper control BB1 for belt hopper of type BBR-i	2-003315
Pendulum switch PS1	Pendulum switch PS1 for automated filling level control of bulk material in the sorting device, compact design, optical status display via LED, inductive switch without wear	2-002099
Stand for BBR-i	Height-adjustable stand with screw-on plate	1-000164
Filling level query	Filling level query in the bulk hopper with light barrier divided into two parts	–
Cover for BBR-i	Cover over the bulk hopper made of transparent acrylic glass	–