

Bowl feeder top parts

Technical data, top part

Bowl feeder - top part, step-shaped						
Designation, top part (steel)	SS290	SS390	SS520	SS650	SS750	SS900
Designation, top part (stainless steel)	ES290	ES390	ES520	ES650	ES750	ES900
Max. filling volume approx. [dm ³]*	1,8	2,5	8	12	18	25
Net weight approx. [kg]	3	4,5	13	15	18	22
Filling weight approx. [kg]*	7	12	16	32	37	45
Matching drive	RF20	RF30	RF40	RF40	RF52	SRC630

Bowl feeder - top part, conical-shaped								
Designation, top part (steel)	SK300	SK400	SK450	SK600	SK650	SK700	SK900	SK950
Designation, top part (stainless steel)	EK300	EK400	EK450	EK600	EK650	EK700	EK900	EK950
Max. filling volume approx. [dm ³]*	1,8	2,5	4	10	12	16	25	25
Net weight approx. [kg]	2,9	5,8	6,5	14,6	15,8	17	27	31
Filling weight approx. [kg]*	7	12	15	25	30	35	45	47
Matching drive	RF20	RF30	RF30	RF40	RF40	RF40	SRC630	SRC630

Bowl feeder - top part, cylindrical-shaped							
Designation, top part (steel)	SZ200	SZ300	SZ400	SZ500	SZ550	SZ600	SZ800
Designation, top part (stainless steel)	EZ200	EZ300	EZ400	EZ500	EZ550	EZ600	EZ800
Max. filling volume approx. [dm ³]*	1	1,5	5	9,5	15	10	35
Net weight approx. [kg]	2	4,5	6	9,5	12,4	11,5	27,5
Filling weight approx. [kg]*	3	7	12	15	16,5	18	40
Matching drive	RF20	RF30	RF40	RF40	RF40	RF40	RF52

Bowl feeder - top part, step-shaped (milled)										
Designation, top part (polyamide LiNNOTAM)	PS150	PS200	PS250	PS300	PS350	PS400	PS450	PS500	PS550	PS600
Max. filling volume approx. [dm ³]*	0,1	0,2	0,3	1	1,2	1,8	1,9	4	4	4
Filling weight approx. [kg]*	2	5	6	7	7	7	7	15	15	15
Matching drive	SRC160	RF20	RF20	RF30	RF30	RF30	RF30	RF40	RF40	RF40

Bowl feeder - top part, conical-shaped (milled)				
Designation, top part (polyamide LiNNOTAM)	PK200	PK300	PK450	PK600
Max. filling volume approx. [dm ³]*	0,2	1	1,9	4
Filling weight approx. [kg]*	2	6	7	15
Matching drive	SRC160	RF20	RF30	RF40

Other sizes are available on request.

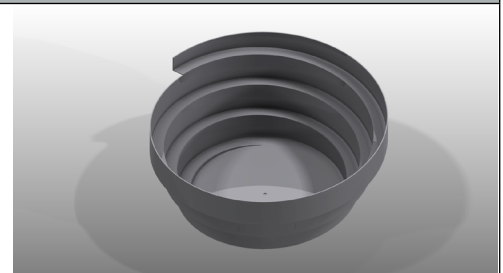
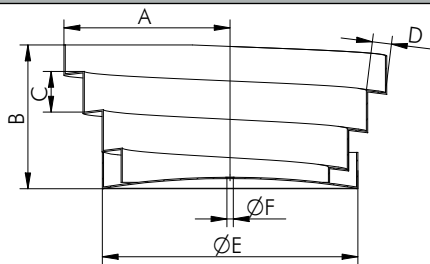
* Filling volume and weight are maximum values and depend on part size and sorting effort.

Dimensions of top parts

Bowl feeder - top part, step-shaped

Designation, top part (steel)	SS290	SS390	SS520	SS650	SS750	SS900
Designation, top part (stainless steel)	ES290	ES390	ES520	ES650	ES750	ES900
A [mm]	145	195	260	325	375	450
B [mm]	ca.140	ca.160	ca.180	ca.250	ca.250	ca.240
C [mm]	37	50	65	80	100	120
D [mm]	23	26	30	50	80	85
Ø E [mm]	200	298	401	401	522	650
Ø F [mm]	9	11	17	17	11	-

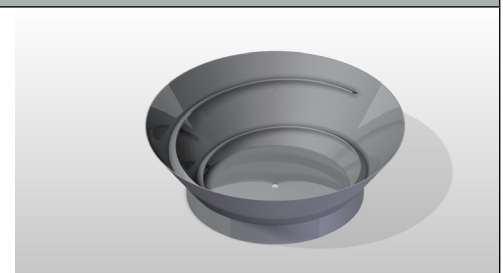
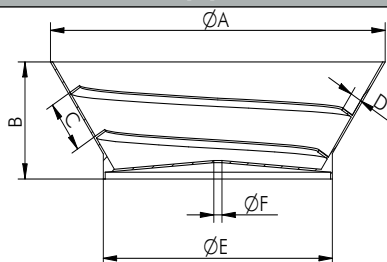
Technical drawing, bowl feeder, top part, step-shaped



Bowl feeder - top part, conical-shaped

Designation, top part (steel)	SK300	SK400	SK450	SK600	SK650	SK700	SK900	SK950
Designation, top part (stainless steel)	EK300	EK400	EK450	EK600	EK650	EK700	EK900	EK950
A [mm]	300	400	450	600	650	700	900	950
B [mm]	100	125	140	200	200	200	300	300
C [mm]	35	50	50	75	75	80	130	130
D [mm]	12	10	15	25	25	20	30	30
Ø E [mm]	200	240	308	410	410	410	600	660
Ø F [mm]	9	11	11	17	17	17	-	-

Technical drawing, bowl feeder, top part, conical-shaped

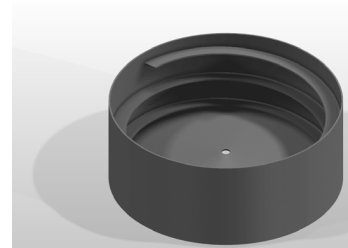
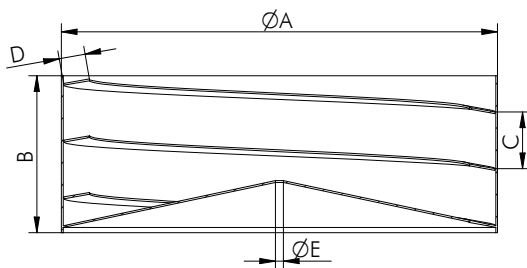


Bowl feeder top parts

Dimensions of top parts

Bowl feeder - top part, cylindrical-shaped							
Designation, top part (steel)	SZ200	SZ300	SZ400	SZ500	SZ550	SZ600	SZ800
Designation, top part (stainless steel)	EZ200	EZ300	EZ400	EZ500	EZ550	EZ600	EZ800
Ø A [mm]	200	300	400	500	550	600	800
B [mm]	100	120	150	180	200	120	300
C [mm]	28	40	52	65	70	70	120
D [mm]	14	20	24	30	40	31	100
Ø E [mm] (drilling)	9	11	17	17	17	17	20

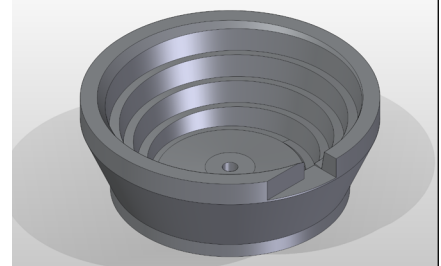
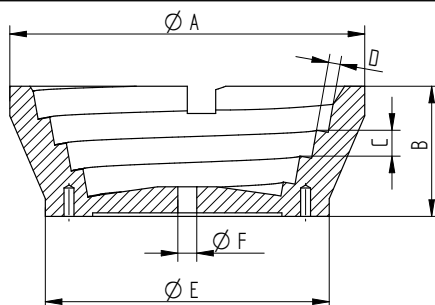
Technical drawing, bowl feeder, top part, cylindrical-shaped



Bowl feeder - top part, step-shaped (milled)

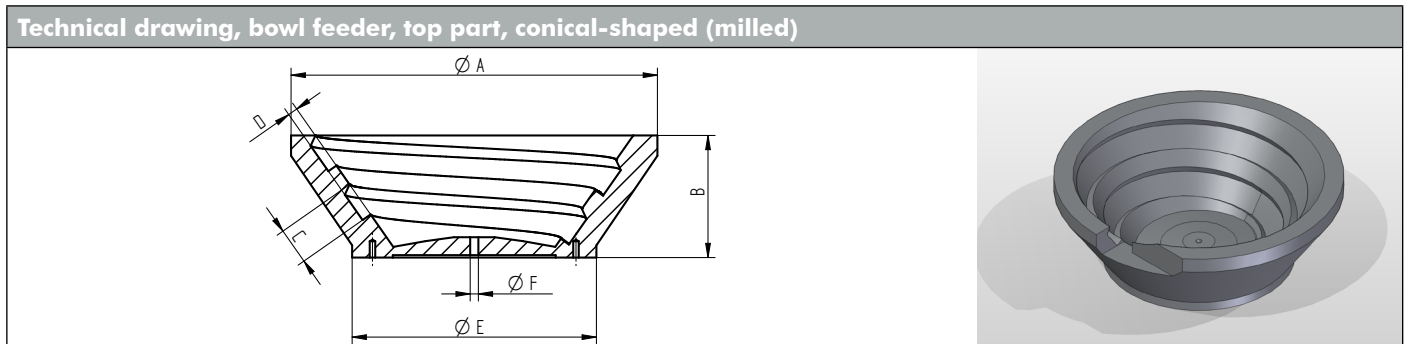
Designation, top part (polyamide LINNOTAM)	PS150	PS200	PS250	PS300	PS350	PS400	PS450	PS500	PS550	PS600
Ø A [mm]	150	200	250	300	350	400	450	500	550	600
B [mm]	55	75	100	100	150	150	150	200	200	200
C [mm]	12	14	18	22	30	38	38	42	48	52
D [mm]	5	6	8	12	12	16	20	20	24	28
Ø E [mm]	120	150	200	200	300	300	300	400	400	400
Ø F [mm] (drilling)	8	8	8	8	10	10	10	16	16	16

Technical drawing, bowl feeder, top part, step-shaped (milled)



Dimensions of top parts

Bowl feeder - top part, conical-shaped (milled)						
Designation, top part (polyamide LiNNOTAM)	PK200	PK300-4	PK300-8	PK450-5	PK450-12	PK600
Ø A [mm]	200	300	300	450	450	600
B [mm]	75	100	100	150	150	200
C [mm]	15	20	23	35	38	53
D [mm]	3	4	8	5	12	15
Ø E [mm]	150	200	200	300	300	400
Ø F [mm] (drilling)	8	8	8	10	10	16



Accessories

Designation	Description	Article no.
Coatings	Habasit, PU sprayed or glued, Nextel, climbing fur	–