

Bowl feeder

Characteristics

The Grimm bowl feeders not only enable the sorting of „difficult“ parts, but also impress with a good price-performance ratio compared to other feeders.

We offer sorting bowls with a diameter of 70 mm to 1200 mm

in three different designs: cylindrical-shaped, step-shaped and conical-shaped in steel, stainless steel or plastic (polyamide).

The plastic sorting bowls are milled and 3D-printed and can therefore be reproduced exactly. This offers a



major advantage for identical bowl feeders.

Even harsh environmental influences such as oil or dirt are no problem for Grimm bowl feeders. Clean room or pharmaceutical designs can also be realised.

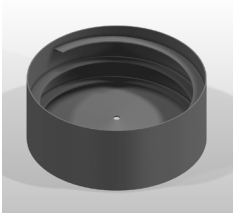
Structure bowl feeder



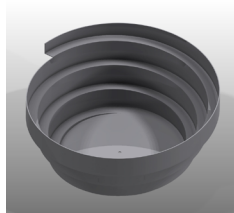
The structure of a bowl feeder is always characterised by two major components:

-  the sorting bowl (top part), in which the parts are aligned and
-  the drive, which generates vibrations in the sorting bowl by means of mechanical oscillations, thereby putting the parts in motion.

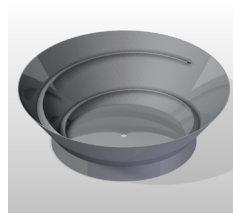
Sorting bowls (extra data sheet)



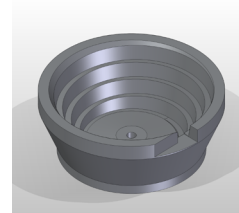
cylindrical-shaped:
Ø 200 - 800 mm



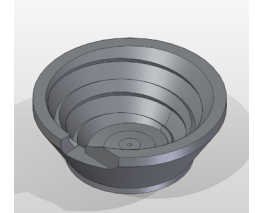
step-shaped:
Ø 290 - 900 mm



conical-shaped:
Ø 300 - 900 mm



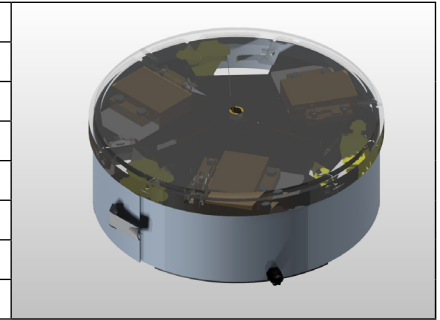
step-shaped (milled):
Ø 150 - 600 mm



conical-shaped (milled):
Ø 200 - 600 mm

Technical data - Drive

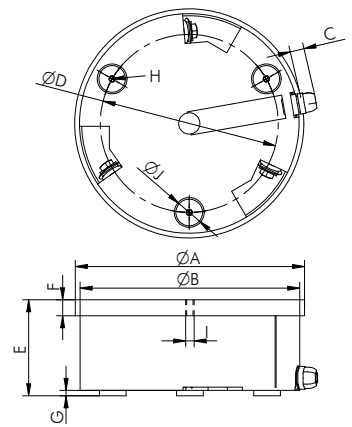
Device type	RF20	RF30	RF40	RF52
Net weight [kg]	10	25	75	145
Mains frequency [Hz]	50	50	50	25
Current consumption (max.) [A]	0,5	1,2	6	3,5
Voltage [V]	230/50**	230/50**	230/50**	230/50**
Protection class	IP 42	IP 42	IP 42	IP 42
Article no. (running direction right)*	10001125	10001127	10001130	10001133
Article no. (running direction left)*	10001124	10001126	10001128	10001132



* for operation with a mains voltage of 230 V / 50 Hz, ** also available in 115 V version

Drive dimensions

Device type	RF20	RF30	RF40	RF52
Ø A [mm]	215	308	418	535
Ø B [mm]	206	288	406	525
C [mm]	12	12	12	12
Ø D [mm]	167	230	320	370
E [mm]	90	120	164	206
F [mm]	15	18	38	38
G [mm]	5	5	10	12
H [mm]	3 x M6	3 x M6	3 x M8	3 x M10
I [mm]	M8	M10	M16	M16
Ø J (3x120°) [mm]	25	25	40	70



Accessories

Designation	Description	Article no.
Control unit FAR-S-1V Control unit FAR-S-1	Phase-controllable, adjustable soft start and sensor inputs for accumulation shutdown and hopper release, without connecting plug and cable	21012029 21008727
Control unit FUR-S-10M, 3A (up to drive type RF30)	For devices up to 3A, frequency-independent control unit, sensor inputs for accumulation shutdown and hopper release, without connecting plug and cable	21010920
Control unit FUR-S-10XL, 6A (from drive type RF40)	For devices up to 6A, frequency-independent control unit, sensor inputs for accumulation shutdown and hopper release, without connecting plug and cable	21010921
Control unit FARR-S-1	Combination device for the control of bowl and linear feeder	21008722
Control unit FUR-S-SW-12XL	For devices up to 6A, frequency-independent control unit with vibration width sensor control including vibration width sensor and sensor inputs for accumulation shutdown and hopper release, without connecting plug and cable	21010922
Control unit FUR-S-SW-1	Frequency inverter specially designed for vibratory feeders, with level control (accumulation shutdown) and optional vibration width sensor	21008730
Pendulum switch PS1	Automatic filling level control of bulk material in the sorting device	21005856
Floor stand SBF	3 radially arranged positioning feet (Ø 500 mm), fixed adapted height	10000182
Floor stand SBV	With fine-setting screw for height and variable adjustment range	60000251
Mounting brackets	For simplified mounting of vibratory feeder drives on a base plate	-